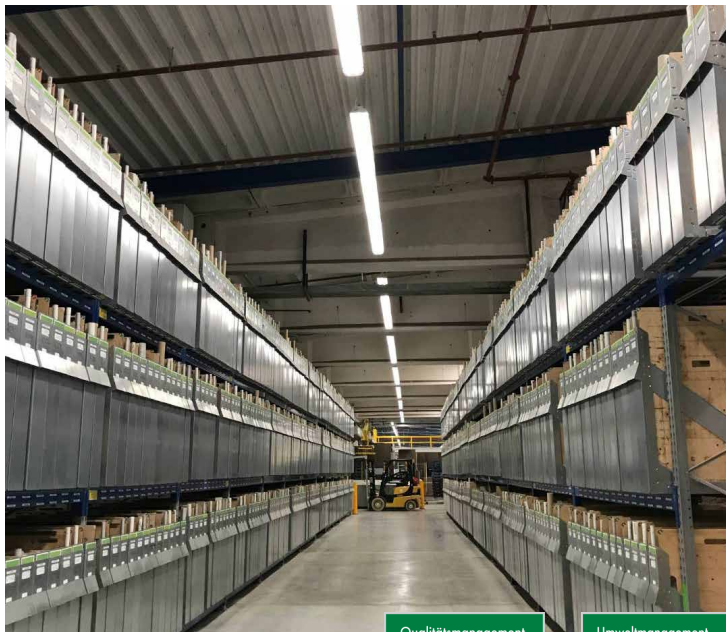




FIXE LZP moisture lamp



Areas of application

GLT FIXE moisture lamp for 1-2 GLT Tubes:

- Industrial areas, for example production halls, warehouses, trade centers
- Parking garages, tunnels
- Public buildings, wholesale stores, logistics hubs

Product benefits

Highest quality and maximum energy saving:

- Moisture lamp for LED tubes without ballast
- Suitabel for standard LED tubes according to EN 62776
- No tools required, quick installation
- Housing made of glass fiber reinforced polyester, light gray, flame retardant
- Cover made of injected polycarbonate (PC) with internal prisms
- Chemically resistant multi-part stainless steel fasteners
- Sliding mounting brackets (+/- 60mm) are included in the scope of delivery
- Up to 80% energy savings with GLT Tube
- Lifetime >30 years
- Made in Germany



article-no.	description
1700060400000025	GLT FIXE LZP moisture lamp for 1 x LED tube 600 mm
1700060400000026	GLT FIXE LZP moisture lamp for 2 x LED tube 600 mm
1700120400000030	GLT FIXE LZP moisture lamp for 1 x LED tube 1200 mm
1700120400000040	GLT FIXE LZP moisture lamp for 2 x LED tube 1200 mm
1700150400000030	GLT FIXE LZP moisture lamp for 1 x LED tube 1500 mm
1700150400000040	GLT FIXE LZP moisture lamp for 2 x LED tube 1500 mm
1700300000000000	GLT FIXE knotted chain 30 m

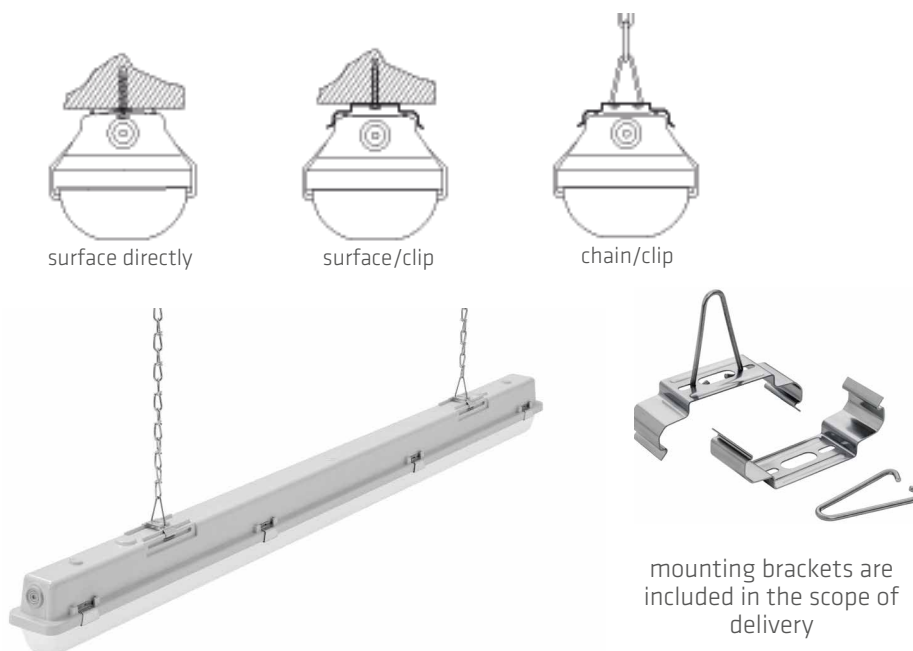


Product data | GLT FIXE L2P moisture lamp

Certificates:	CE, Made in Germany, certified for the food sector (HACCP)	
D-certificate:	yes	
IP protection class:	IP 65	
IK protection class:	IK07	
Flammability (UL94):	HB	
Glow wire resistance:	PC 850°C	
Energy efficiency class:	A - B with GLT Tube	
Warranty:	5 years	
Socket/base:	G13/T8	
Cover:	Cover made of injected polycarbonate (PC) with internal prisms	
Housing:	Housing made of glass fiber reinforced polyester, light gray, flame retardant	
Net weight:	1 x GLT TUBE LED tube 600 mm: 1,8 kg LED tube 1200 mm: 2,4 kg LED tube 1500 mm: 2,6 kg	2 x GLT TUBE LED tube 600 mm: 2,4 kg LED tube 1200 mm: 3,9 kg LED tube 1500 mm: 5,4 kg
Dimensions (L x B x H):	1 x GLT TUBE LED tube 600 mm: 661 x 115 x 100 mm LED tube 1200 mm: 1265 x 115 x 100 mm LED tube 1500 mm: 1565 x 115 x 100 mm	2 x GLT TUBE LED tube 600 mm: 661 x 175 x 100 mm LED tube 1200 mm: 1265 x 175 x 100 mm LED tube 1500 mm: 1565 x 175 x 100 mm
Electrical data		
Consumption (with GLT Tube):	1 x GLT TUBE LED tube 600 mm: 7 W LED tube 1200 mm: 14 W LED tube 1500 mm: 17 W	2 x GLT TUBE LED tube 600 mm: 2 x 7 W LED tube 1200 mm: 2 x 14 W LED tube 1500 mm: 2 x 17 W
Input voltage:	230 Volt	
Operating frequency:	50 - 60 Hz	
Lifetime:	>30 years	

Mounting

Easy fastening with multifunctional quick-assembly mounting clips made of stainless steel. Variable displacement range of 60 mm. Approved for indoor use or in outdoor areas, protected by a roof. Suitable for mounting on the wall, ceiling, mounting rail or suspended. Connection of the mechanical and electrical components without tools. 3-pole connecting-clip with screw contact.



The luminaire complies with the basic requirements of the applicable EU directives and product safety law and carries the CE mark. Please consult your consultant if the luminaire is to be used in chemically polluted environments, under increased ambient temperatures or high or condensing humidity.